

Development of Strategic Plan 2019 - Driver Diagram

Key:

In order to achieve this aim..

We need to ensure...
Primary Drivers

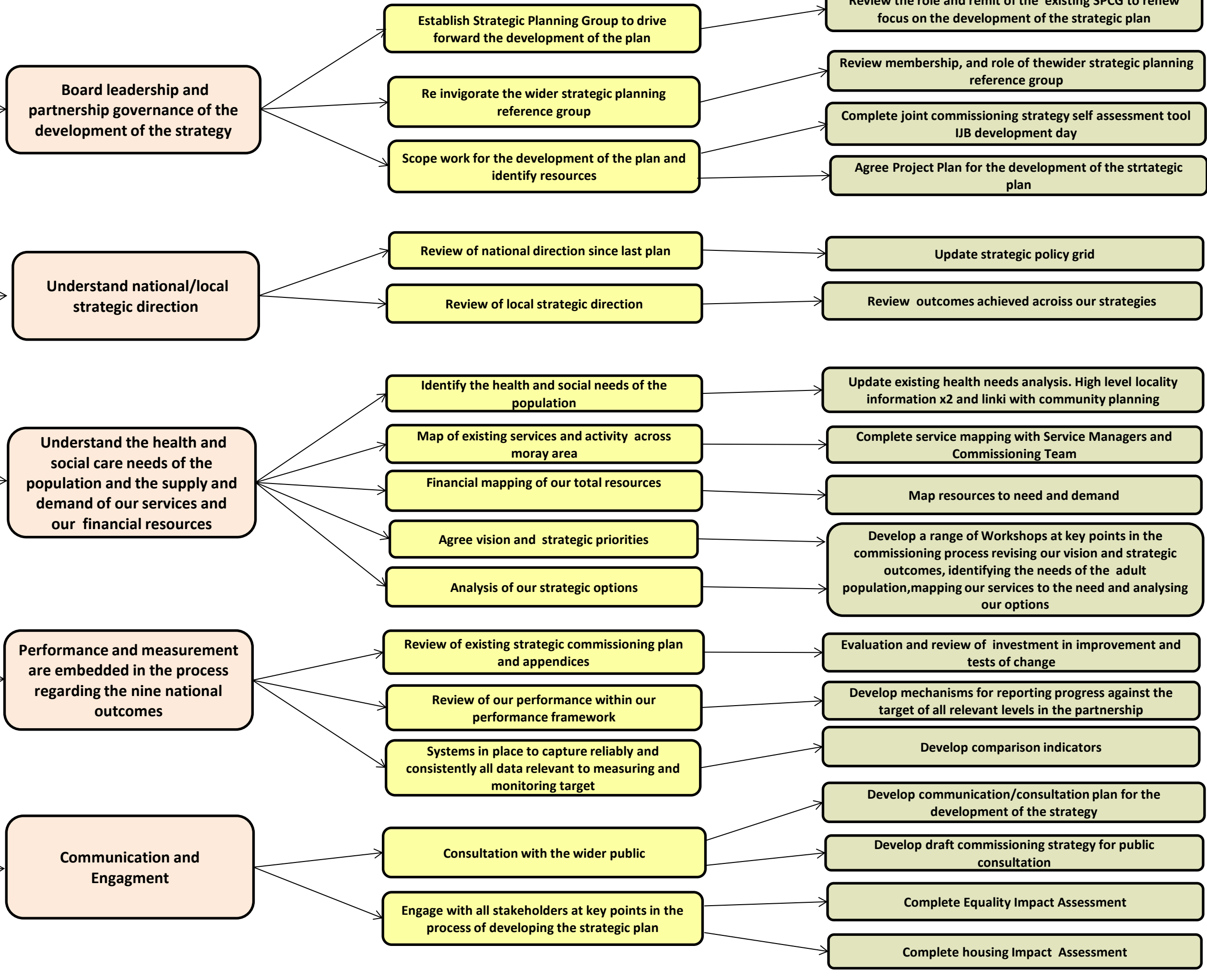
Which requires...
Secondary Drivers

Change ideas to ensure this happens
Interventions

To develop a commissioning strategy for all adults in Moray which is agreed by all stakeholders and describes how we will improve:

- The quality of care for people by targeting investment at improving services, which will be organised and better delivered to provide the best, most effective support for all (**better care**)
- Everyone's health and wellbeing by promoting and supporting healthier lives from the earliest years, reducing health inequalities and adopting an approach based on anticipation, prevention and self management (**better health**)
- Increase the value from, and financial sustainability of, care by making the most cost effective use of resources available to us and the most efficient and consistent delivery, ensuring that the balance of resource is spent where it achieves the most and focusing on prevention and early intervention (**better value**)

with the aim of delivering better health and wellbeing outcomes



IJB Integrated Joint Board
SPSG Strategic Planning Steering Group

